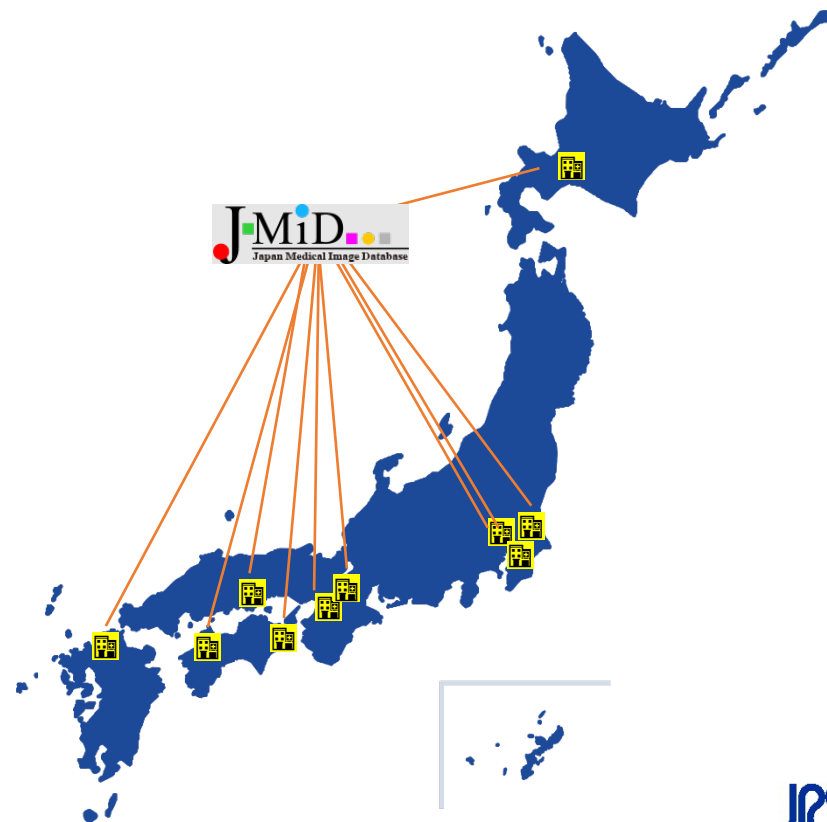
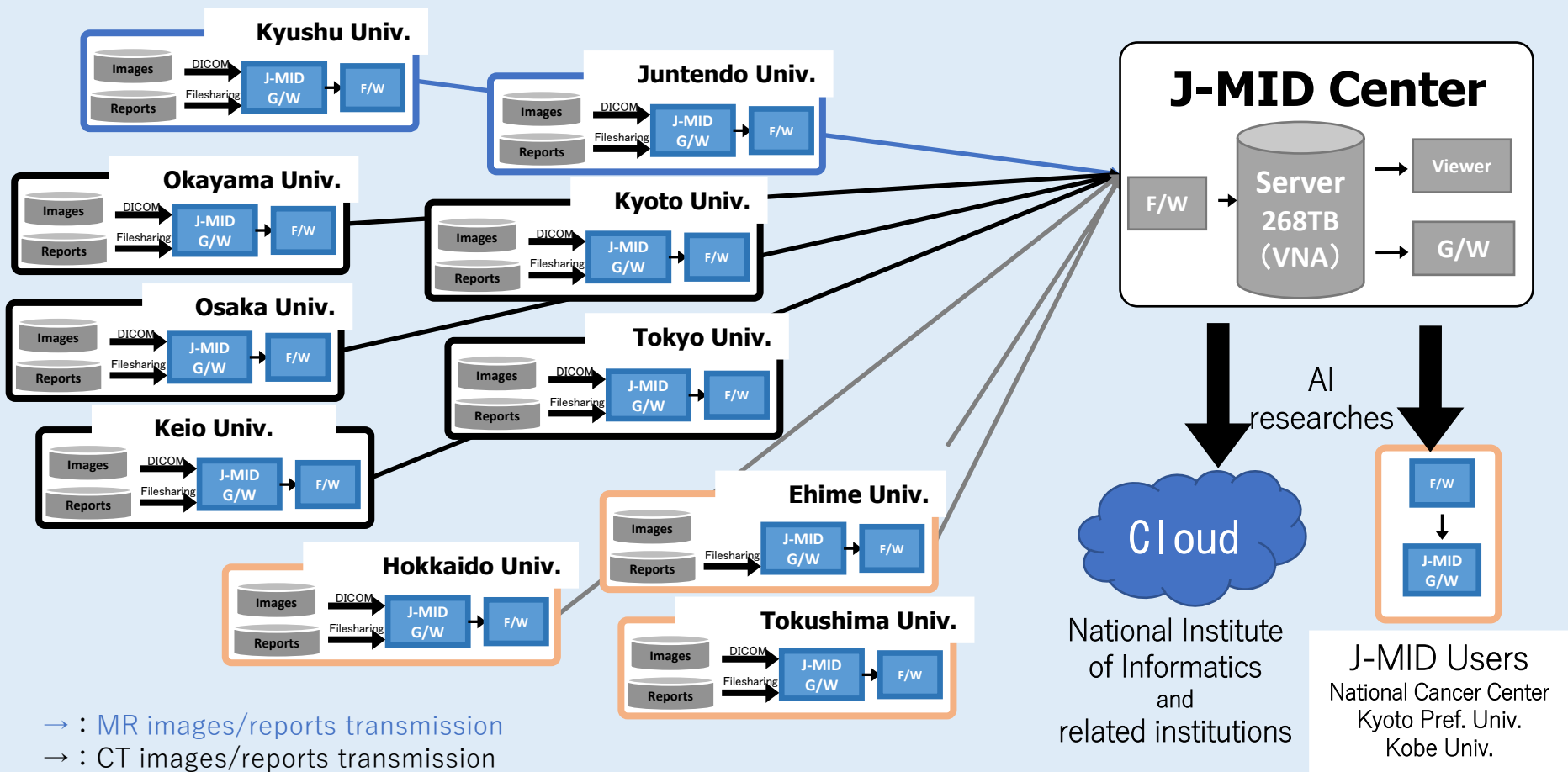


Japan Medical Image Database

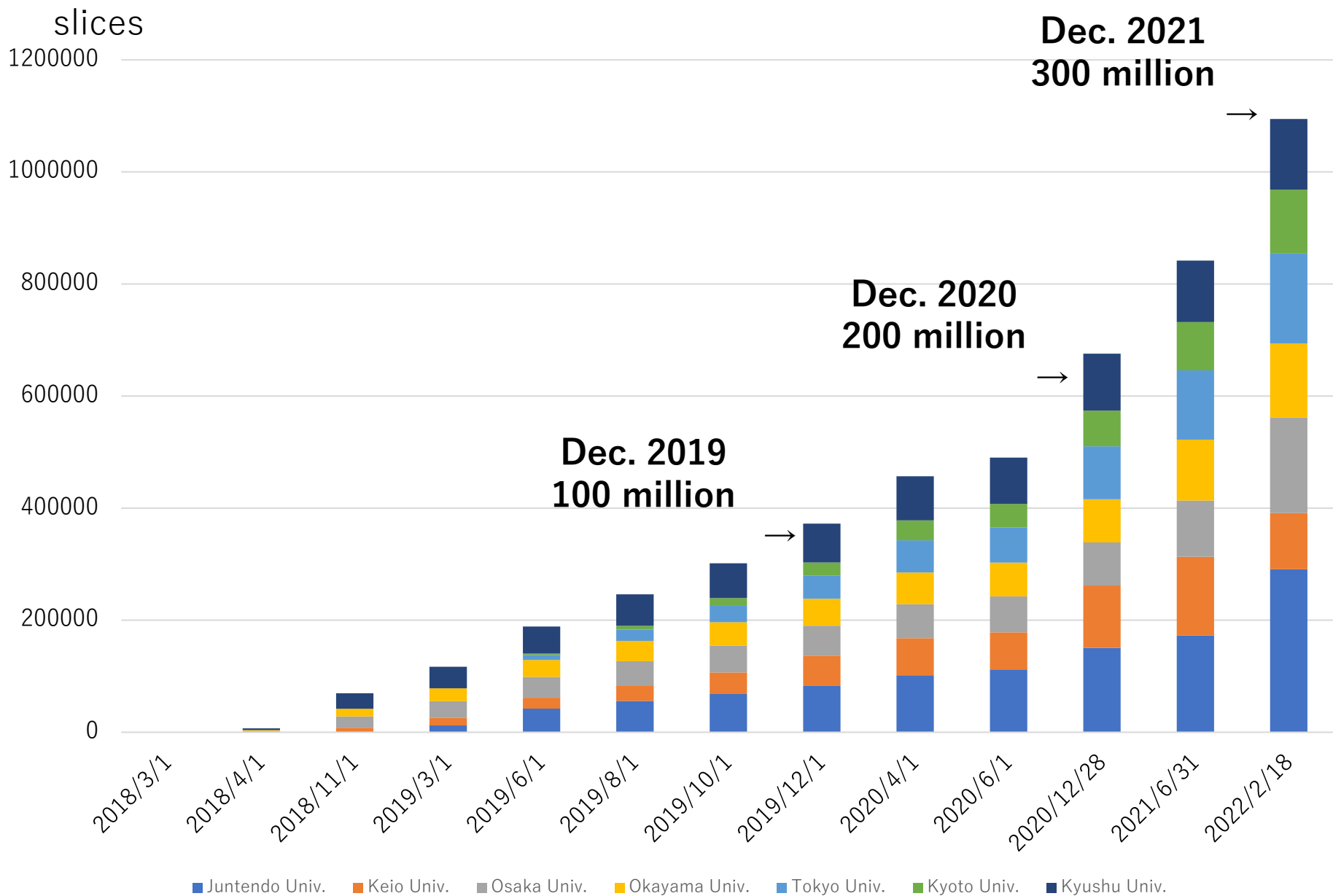
画像診断ナショナルデータベース実現のための研究開発

- The Japan Medical Image Database (J-MID) project started in March 2018 at the initiative of the Japan Radiological Society
- J-MID is a nationwide centralized image/report database which is used to accelerate AI development, analyze radiation dose, and to manage other challenges in Radiology

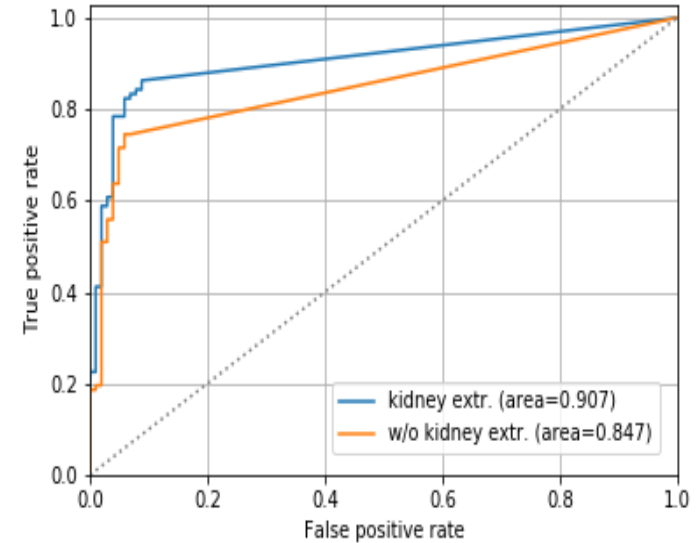
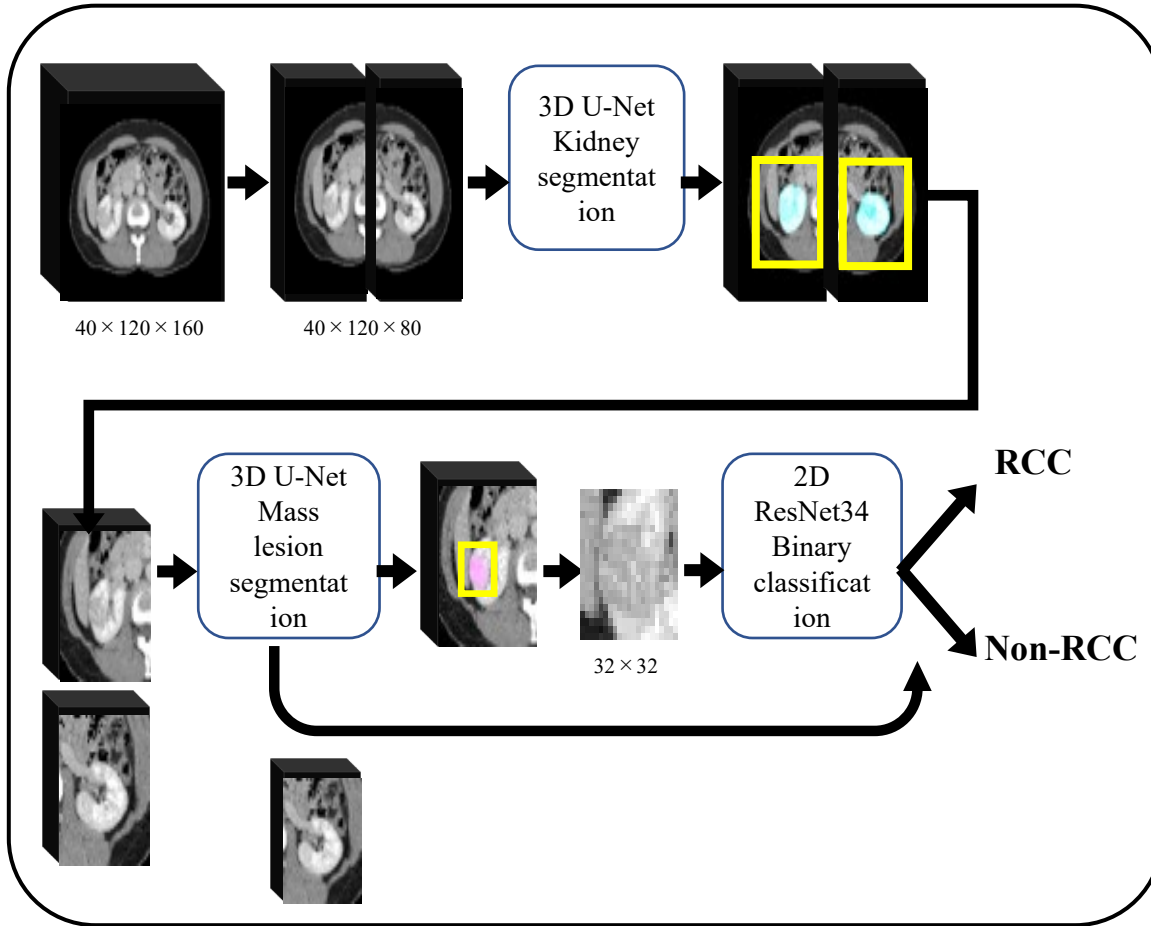




- J-MID includes CT/MR images and radiology reports from seven major university hospitals in Japan.
- For AI development, high-quality annotations are being generated.
- Radiation dose structured reports (RDSR) have been also collected to analyse CT radiation dose distribution

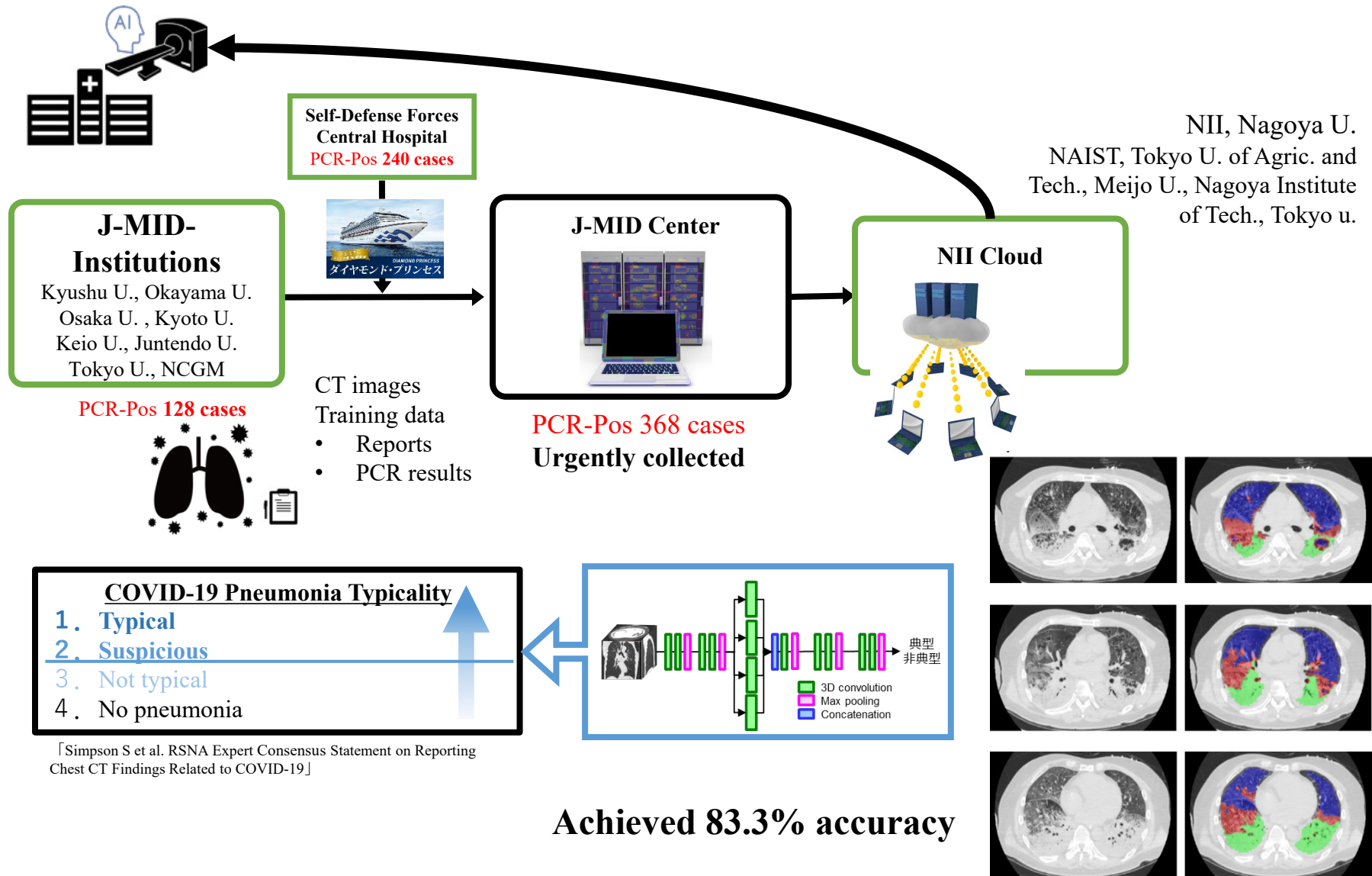


Detection of renal carcinomas on contrast-enhanced CT



Sen : 0.833 Spe : 0.926
 AUC : 0.907

Detection of viral pneumonia (covid-19)



Standardization of acquired quantitative values in 3D-QALAS

- 5 scanners from 4 vendors (GE, Siemens, Philips, Canon)
- Intra-scanner coefficient of variation 0.5–2.1%
- Inter-scanner coefficient of variation < 5%

